

INSTALLATION & WARNINGS FOR THE ROBOTool GRIP- STIK TAP TWISTER

READ WARNINGS BELOW PRIOR TO INSTALLATION

WARNINGS

- Read all instructions before using this unit. **Warning: Any use not recommended or described in the instructions may cause serious injury or death.**
- “Grip-Stik Tap Twister” should only be used by a qualified Lineman or Journeyman
- The “Grip-Stik Twister Tap Twister” is designed only to be used for **switching taps** on a **34.5 kv Padmount Transformer**
- The “Hot Stick” must be OSHA and ASTM-F-711 tested and approved.
- Only use the “Grip-Stik Tap Twister” on approved “Hot Stick” or “Switch Stick” with 1 ¼” Dia. Body
- The Hot Stick” must be free of defects and in good working order
- If “Hot Stick” is used for overhead work, the “Grip-Stik Tap Twister” must be removed from the “Hot Stick”.
- This unit is not intended to be left on the “Hot Stick” if the “Hot Stick” will be used for anything other than a **34.5 kv Padmount Transformer.**
- Never leave the unit on the “Hot Stick” if you intend to do any other work with the stick.
- Do not insert, modify, or allow foreign objects to enter any moving parts of the “Grip-Stik Tap Twister “
- Always wear PPE when opening or closing a **34.5 kv Padmount Transformer**
- Safety check the **34.5 kv Padmount Transformer** for any signs of damage ex: flashed elbows etc.
- Ensure the “Grip-Stik Tap Twister” is installed correctly and in the safe position. Both handles must be locked into position before operating.
- If you have any health conditions or are on prescription drugs please consult your doctor before using ” Grip-Stik Tap Twister.”

TOOLS NEEDED FOR INSTALLATION

3/16” Allen Wrench

½” Open End Wrench

INSTRUCTIONS FOR INSTALLATION

1. Retract the “Hot Stick” so finger or hook is not extended. Trigger on “Hot Stick” is facing down.

2. Lay the body of the “Grip-Stik Tap Twister” under the “Hot Stick”.
“Must be mounted below the safety zone.”

3. Mount the “**Cap**” piece on the top of the body with “**3/16” Allen Wrench**” and tighten the “**Hex Bolts**” evenly. “**Do not over tighten** “

4. Screw in the two “**Locking Pins**”:
You will feel them seat in the tool.



INSTALLATION & WARNINGS
FOR THE ROBOTool GRIP- STIK TAP TWISTER

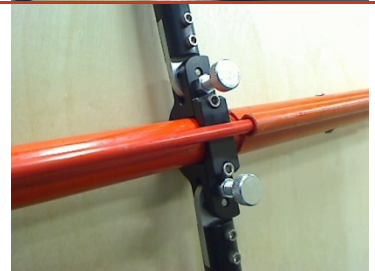
5. Take ½” “Open End Wrench” and snug the “Lock Nuts” on the “Locking Pins”. “Do not over tighten”



6. To rotate handles into position, pull “Knob” on “Locking Pins” straight up and rotate arms to 90 degrees. “Knob” will lock into position.



7. At working position handles will be extended to 90 degrees.

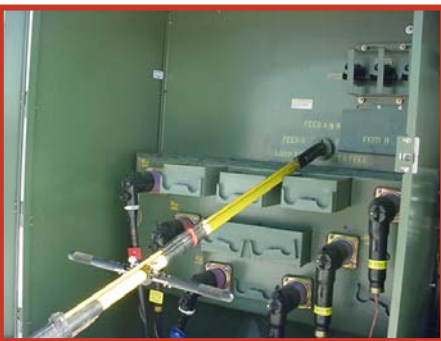


8. To collapse handles back against “Hot Stick” disengage “Knobs” and move handles until they lock.

Note: If handles on the “Tap Twister” operate stiff, loosen “Lock Nuts” on the “Locking Pins” and adjust.



Proper Field use of the “Grip-Stik Tap Twister” on a 34.5 kv PadMount Transformer



Robotool Lifetime WARRANTY

Robotools are manufactured under the highest standards and quality. The warranty does not cover part failure due to tool abuse or misuse.

For Repair Ship Tool to: **UTILITY DIVISION - Aircraft Dynamics Corporation**
418 East Kiracofe Avenue
Elida, Ohio 45807
800-874-4702
www.aircrafterdynamics.com