

# ROBOTTOOLS<sup>TM</sup>

Utility Division

PRODUCT CATALOG



AIRCRAFT  DYNAMICS

[AIRCRAFTDYNAMICS.COM](http://AIRCRAFTDYNAMICS.COM)



# CUSTOMER SERVICE

*Established in 1962*

AIRCRAFT  DYNAMICS

## PLEASE CONTACT US ANYTIME

For over 50 YEARS, Aircraft Dynamics Corporation has been solving problems and creating solutions for those who make our lives safer. We take pride in designing and producing quality innovative products to assist Utilities, Military, Fire and Rescue, and other professionals all over the world. Many of our products and services are a result of direct contact with you. If you ever have questions regarding our products, have a product idea, or problem you would like us to help you with, please contact us anytime. When you contact us, you will not be lost in an endless circle of voice mails, instead, you will be able to talk with, and have direct access to, anyone within our company. We look forward to your call. 1-800-874-4702

## QUALITY PRODUCTS AND SERVICE

Designing and producing high-quality products is not our only goal. Equally important, Customer Service is also our focus. We have been fortunate through the years to develop quality products that are durable, reliable and have "stood the test of time." However if a problem should ever arise regarding a product or service that we provide, you have our word that we will make our greatest effort to correct any inconvenience. We will be there for you before, during and after the completion of your order.



As you look through our catalog, you will see a wide variety of specialized products focusing on Utility and other professional applications. Unfortunately, written materials are static in time and may not always reflect new or improved items. Therefore, we would also like to point out that our products, and newly developed additions, can be viewed and purchased on our web site.

*Sincerely,*  
All Employees  
Aircraft Dynamics Corporation

*Solving Problems  
for Those who Help Others*

*... Is Our Business*

Mailing: P.O. Box 3038 Elida, Ohio 45807  
Shipping: 418 East Kiracofe Ave. Elida, Ohio 45807

Tel: 800-874-4702 / 419-331-0371  
Fax: 800-456-9244 / 419-331-7349



**WWW.AIRCRAFTDYNAMICS.COM**



# AIRCRAFT DYNAMICS®



## Pole Transportation & Safety pgs 2 - 7

- Pole Bug, Pole Tack, Flag Holders & Flags
- Flare Lights, Cone Lights



## Wire Containment & Accessories pgs 8 - 11

- Guywire & Triplex RoboReels™
- HDPE Gas Pipe RoboReels™

## Sockets, Bits & Adapters pgs 12 - 16

- Utility Deep Well, Penta, Hex Sockets
- Jacob's Chuck, Tri-Ball Q-Change, Blue Bully®
- Penta T-Wrench, Drill Bits, Ground Rod Drivers
- Dirt Bags, Auger Socks, Grip Stik

## Impacts, Batteries & Adapters pgs 17 - 22

- RoboImpacts®, RoboPaks® and Tool Adapters

## LED Lights pgs 23 - 25

- Utility LED Helmet Lights, Scene Lighting,
- Handheld, Traffic Safety



1-800-874-4702





# Pole Transportation Safety

## LED 360° Strobes

360° LED strobes utilize 12 long lasting LEDs to create a highly visible 60 flashes per minute strobe. System is easy to attach and deploy, using a heavy duty strap that attaches to all types of poles and sizes. Strobe is protected by a rugged cage and includes powder coated metal components. Powered by 2 D-cell alkaline batteries for up to 600hrs of battery life.



### Standard 360 Kit

Cat. No. 7167-R (Red)

Cat. No. 7167-A (Amber)

includes 2 Red flags



### 3 Flag 360 Kit

Cat. No. 7360-R (Red)

Cat. No. 7360-A (Amber)

includes 3 Red flags





# Pole Transportation Safety



## Mid Pole 360 Kit

Cat. No. 7175-R (Red)

Cat. No. 7175-A (Amber)



## 360 Bolt-thru Kit

Cat. No. 7219-R (Red)

Cat. No. 7219-A (Amber)

includes 2 Red flags



## 360 Bolt-thru

Cat. No. 7177-R (Red)

Cat. No. 7177-A (Amber)





# Pole Transportation Safety

#1 Pole Transportation Safety System. Small and easy to store, yet extremely rugged with LED technology rated for 100,000 hours of heavy duty operation. Long range visibility of 5+ miles with four alternative flash patterns: Comet, Single, Steady Burn and Flare Flicker. Light modules are encapsulated for vibration and moisture resistance with front angled reflectors (front and side viewing). Easy to attach using a heavy duty strap that attaches to all poles. Additional features include powder coated metal components and powered by 3 alkaline C-cell batteries.



## Pole Bug Kit

Cat. No. 7015-R (Red)

Cat. No. 7015-A (Amber)

includes 2 Red flags



## Dual Pole Bug Kit

Cat. No. 7026-R (Red)

Cat. No. 7026-A (Amber)

includes 2 Red flags





# Pole Transportation Safety

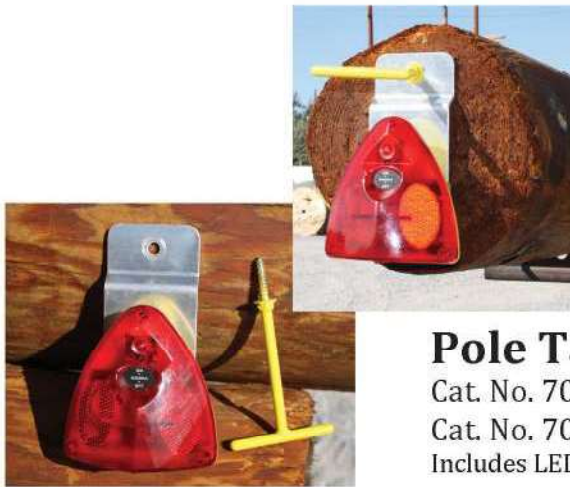


## 3 Flag Pole Bug Kit

Cat. No. 7315-R (Red)

Cat. No. 7315-A (Amber)

includes 3 Red flags



## Pole Tacker Kit

Cat. No. 7032-R (Red)

Cat. No. 7032-A (Amber)

Includes LED & T-screw



## Saber Tooth 3- Flag Holder

Cat. No. 2612

\* Flags sold separately



## Dual Flag Holder

Cat. No. 2642

\* Flags sold separately





# Pole Transportation Safety

## LED Wired Light Bar

- 36" light weight aluminum frame, powder coated safety orange
- 2" wide heavy duty binding ratchet strap
- LED STOP/ TURN/ TAIL lights DOT approved
- LED side marker lights DOT approved
- 11/16" hole in mounting cradle for 5/8" bolt for extra security
- Includes 40' of DuraFlex 4/14 cordage
- Includes (2) 18" square mesh safety flags
- Trailer wiring Options:
  - 4 way round / 6 way round/ 7 way RV plug
- Optional 12 LED - 360 degree flashing or Solid pattern, battery powered strobe - Amber or Red available



### CAT NO.

- |         |  |
|---------|--|
| 7700-4R | Light Bar w/ 40' cord - 4 way round plug |
| 7700-6R | Light Bar w/ 40' cord - 6 way round plug |
| 7700-RV | Light Bar w/ 40' cord - 7 way RV plug    |

- |              |  |
|--------------|--|
| 7700-4R-A360 | Light Bar w/ 40' cord - 4 way round - 360 Amber Strobe   |
| 7700-4R-R360 | Light Bar w/ 40' cord - 4 way round - 360 Red Strobe     |
| 7700-6R-A360 | Light Bar w/ 40' cord - 6 way round - 360 Amber Strobe   |
| 7700-6R-R360 | Light Bar w/ 40' cord - 6 way round - 360 Red Strobe     |
| 7700-RV-A360 | Light Bar w/ 40' cord - 7 way RV plug - 360 Amber Strobe |
| 7700-RV-R360 | Light Bar w/ 40' cord - 7 way RV plug - 360 Red Strobe   |





# Pole Transportation Safety



**Replacement Red LED**  
Cat No. - 7028



**Replacement 360 LED Red**  
Cat No. - 7169



**Replacement LED Amber**  
Cat No. - 7030



**Replacement 360 LED Amber**  
Cat No. - 7164

## **Replacement Flags**

Specifically designed for high speed transport or stationary use, each flag is constructed of light weight heavy-duty mesh which is extremely durable and will provide you with extended use.

Dimensions: Flags 18" x 18" (Square)  
Wood Staff & PVC end: 24" Long



**Red Flag**  
Cat. No. 7074



**Orange Flag**  
Cat. No. 7474



**Red - Cat. No. 7144**  
**Orange - Cat. No. 7247**  
**Heavy Duty 1" Nylon Dowel**



# ROBOREELS™

## Wire containment & payout reel

Triplex and Guy Wire RoboReels are designed for linemen to provide an easy and safe means to unwind and rewind cumbersome wire and cable. Extremely rugged, all-weather heavy duty reels. Made of steel and Industrial coated to ensure long life, RoboReels have adjustable arms that allow an easy and secure means of loading, unwinding and rewinding various coils with different diameters. Coils can be simply rolled into the stand, and with the adjustable arms, securely clamped into place in seconds. Wire or cable is then easily pulled or rewound through smooth center guides.



### Triplex RoboReel™ Cat. No. 5478



- 8 adjustable arms
- Holds coils up to 10-1/4" wide
- Accepts coils
  - outside dia. 26" - 32"
  - inside dia. 14" - 20"
- Dimensions: 34-1/2" H x 14" D x 33-1/2" W
- Weight: 58 lbs.

### RoboReel™ Hitch mount accessory Cat. No. 5479



Tight On Space? Securely mount RoboReels™  
Fits 2" receiver hitch  
Swivel mount allows pulling from any direction



### RoboReel™ Quick Change Base Plate Cat. No. 5074



Great space organizer.  
Ideal accessory for those who  
want a quick means to remove or remount  
your RoboReel.™

\*\* not compatible with horizontal reels.\*\*





# ROBOREELS™



## Guy Wire RoboReel™ Cat. No. 5276

- 4 adjustable arms
- Holds guy wire with 1/2" diameters
- Accepts coil - outside dia. 22" - 31"
- Holds coils up to 4.75" wide
- Dimensions: 33 3/4" H x 9 1/4" D x 32 1/4"W
- Weight: 41 lbs.
- Wire can be pulled from either direction



## Guy Wire RoboReel™ for large diameter coils Cat. No. 5415

- 4 adjustable arms
- Holds guy wire with 1/2" diameters
- Accepts coil - outside dia. 32" - 36"
- Holds coils up to 8 3/4" Wide
- Weight: 54 lbs.



# ROBOREELS™

## RoboReel™ Maxx Cat. No. 5004

- Easy to load - Works with Triplex or ACSR type wire
- Adjust arms out to tighten against inside of the coil
- Brake locks arms in place
- Removable outside hooks adjust for different coil widths
- For use with coils up to 34" wide

Inside diameter 13" to 20" and widths up to 13"

- Adjustment crank included
- Mounting base 30" x 23 3/4"
- Weight: 110 lbs



## Horizontal Mount Triplex RoboReel™ Cat. No. 5456

- 4 adjustable arms
- Holds coils up to 8 3/4" Wide
- Accepts coil
  - outside dia. 27" - 32"
  - inside dia. 16" - 21"
- Dimensions: 14" H x 34" D x 34" W
- Weight: 37 lbs





# ROBOREELS™



## HDPE Gas Pipe RoboReel™

- Designed for 1" HDPE Gas Distribution Pipe
- Pipe pulls from Inside through roller guide system
- 4 Adjustable arms
- Dimensions: 52" H x 22" D x 48" W
- Weight: 65 lbs.
- Accepts gas pipe coils with following dimensions

Inside Dia: 24" - 32"

Outside Dia: 42" - 50"

Width: 13.5"



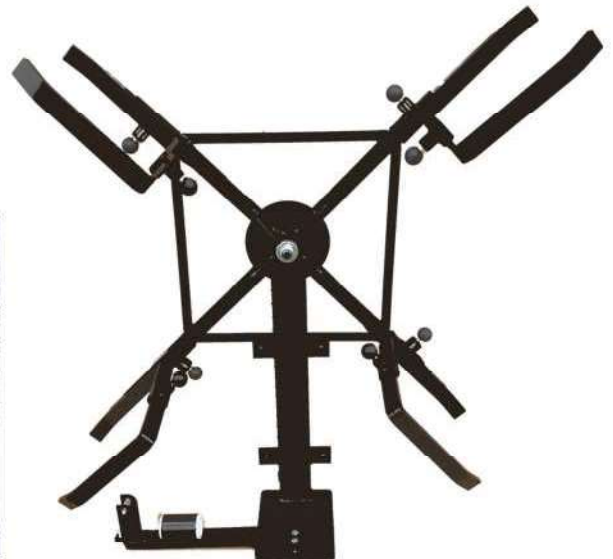
Cat No. 5740  
for 1" HDPE Gas Distribution Pipe

- Designed for 1/2" HDPE Gas Distribution Pipe
- Adjustable brake and clamping system
- 8 Adjustable arms
- Dimensions: 52" H x 14" D x 48" W
- Weight: 65 lbs.
- Accepts gas pipe coils with the following dimensions

Inside Dia: 24" - 32"

Outside Dia: 42" - 50"

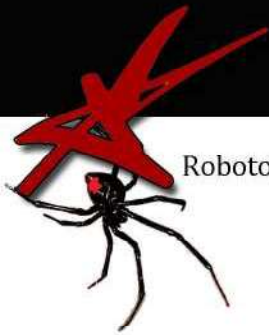
Width: 6" - 10"



Cat No. 5730  
for 1/2" HDPE Gas Distribution Pipe



# Black Widow Bits™



Robotool™ Black Widow Bits are rugged, heat treated and with proprietary flute design, Self-feeding screw and cutting spur, will cut through the hardest poles with ease and will decrease average drilling times by 50%.



**Solid Foam / Core  
Fiberglass Bits**

**7/16" Shank**

Designed specifically for drilling  
**solid foam core** utility poles  
made from  
**Fiberglass, Resin or  
composite materials**

**Cat. No. Bit Dia. Length**

2688	1/2"	12"
2678	9/16"	12"
2686	11/16"	12"
2682	13/16"	12"

2676	9/16"	18"
2684	11/16"	18"
2680	13/16"	18"
2689	1 - 1/16"	18"



**Hollow Core  
Fiberglass Bits**

**7/16" Shank**

Designed specifically for drilling  
**hollow core** utility poles made from  
**Fiberglass, Resin or  
composite materials**

**Cat. No. Bit Dia. Length**

2890	11/16"	12"
2882	13/16"	12"
2897	1 1/8"	12"

2878	9/16"	18"
2888	11/16"	18"
2884	13/16"	18"
2896	15/16"	18"
2892	1"	18"
2894	1 1/8"	18"

2876	9/16"	24"
2886	11/16"	24"
2880	13/16"	24"
2872	15/16"	24"
2868	1"	24"



**Wood Bits**  
**7/16" Shank**

**Cat. No. Bit Dia. Length**

2525	9/16"	18"
2523	11/16"	18"
2524	13/16"	18"
2577	7/8"	18"
2526	15/16"	18"
2516	1"	18"
2542	1 - 1/16"	18"
2533	1 - 1/8"	18"
2588	1 - 1/4"	18"
2561	1 - 1/2"	18"

2527	11/16"	24"
2528	13/16"	24"
2543	7/8"	24"
2529	15/16"	24"
2532	1"	24"
2531	1 - 1/16"	24"
2534	1 - 1/8"	24"
2536	1 - 1/4"	24"
2537	1 - 3/8"	24"
2578	1 - 1/2"	24"



**Note: All 1" and larger diameter bits are  
not designed for use with Impact tools.**



# Barracuda Bits™



## Barracuda Ultra Smooth Augers

Three cutting Spurs for fast, smooth cutting without resistance

Teflon coated to resist heat and friction

Designed to cut smooth hole without "Blowout" in framing lumber



### 7 1/2" Length 7/16" Shank Cat. No. Diameter

2907-6	3/8"
2907-7	7/16"
2907-8	1/2"
2907-9	9/16"
2907-10	5/8"
2907-11	11/16"
2907-12	3/4"
2907-13	13/16"
2907-14	7/8"
2907-15	15/16"
2907-16	1"
2907-18	1 1/8"
2907-20	1 1/4"
2907-22	1 3/8"
2907-24	1 1/2"

### 18" Length 7/16" Shank Cat. No. Diameter

2918-6	3/8"
2918-7	7/16"
2918-8	1/2"
2918-9	9/16"
2918-10	5/8"
2918-11	11/16"
2918-12	3/4"
2918-13	13/16"
2918-14	7/8"
2918-15	15/16"
2918-16	1"
2918-18	1 1/8"
2918-20	1 1/4"
2918-22	1 3/8"
2918-24	1 1/2"

*Note: All 1" and larger diameter bits are not designed for use with Impact tools.*



### Drill Bit Holder

Cat. No. 9296

- Holds four pole bits up to 1" diameters and any length
- Will mount in vehicles or on any vertical surface
- Weather proof — will not rust





# ROBOTOOLS™

**ARE YOUR SOCKETS IMPACT QUALITY SAFE?**

Black Oxide Finish - Heavy-Duty Impact Quality Steel - Best Sockets Available!



**1/2" Sq. Dr. Hex  
Deep Well**  
• Length: 3.042"

**Cat. No. - Size**

2405 - 7/16"  
2407 - 1/2"  
2408 - 9/16"  
2410 - 5/8"  
2412 - 11/16"  
2413 - 3/4"  
2414 - 13/16"  
2415 - 7/8"  
2416 - 15/16"  
2417 - 1.0"  
2418 - 1 1/16"  
2419 - 1 1/8"  
2420 - 1 1/4"  
2421 - 1 3/8"  
2422 - 1 1/2"



**1/2" Sq. Dr.  
Double Sq.**

Length - 3 1/2"

**Cat. No. - Size**

2489 - 1-1/8"  
2490 - 9/16"  
2491 - 3/4"  
2492 - 13/16"  
2493 - 7/8"  
2494 - 1"



**1/2" Sq. Dr. Double Sq.  
Deep Well — Double Duty**  
• 2 Sockets in 1 • Length: 5"

Cat. No. 2757 1" and 1-1/8" Openings  
Cat. No. 2751 13/16" and 15/16" openings  
Cat. No. 2710 1-1/8" and 1-5/16"



## Socket Sets



• Heavy Duty 1/2" Sq. Dr. / Double Sq

Cat. No. 2758 includes:  
9/16", 13/16", 1" and 1-1/8" Sockets

Cat. No. 2753 includes:  
13/16", 7/8", 1" and 1-1/8" Sockets  
*Includes the Blue Bully adapters*



*The only penta  
socket that uses  
impact quality  
steel.*

**1/2" Sq. Dr.  
Penta Socket**

**Cat. No. 2775**

- Inside Length: 1/2"
- Opening: 13/16"
- Overall Length: 2"

**ROBOTOOL™ LIFETIME  
★ WARRANTY  
ON ALL SOCKETS!**

- Overall Length: 7.25"
- Penta Opening: 13/16"
- Inside Length: 1/2"
- Weight: 14 oz.



**Penta T-Wrench  
Cat. No. 2779**

Penta Socket with black oxide finish and proprietary impact steel is securely attached to plastic coated comfort grip "T" handle for extra leverage. Easily remove and tighten Penta Bolts.

**Cat. No. 2403  
Tri - Ball Quick Change Chuck**



Super Heavy Duty 7/16" (1/2" Sq. Dr.) Quick-Change Chuck. The most secure and durable quick change chuck available! Utilizing a proprietary three ball bearing system, this chuck will secure your bits, adapters and sockets under extreme circumstances. Designed to be used with high torque 1/2" sq. drive impact wrenches.





# ROBOTTOOLS™

## Ground Rod Driver

For Use With Your Hydraulic Tamp or Electric Hammer.  
Save Your Back, Arms, Shoulders, Time and Money!

### Cat. No. 5043 - Hydraulic SHOE and 5008 DRIVER

- Very easy to use
- Mounts easily and securely to all rods

### Cat. No. 5008 THUMB DRIVER

is also sold separately. Driver is designed to be used independently and to drive 3/4" and smaller ground rods with electric tools

### Cat. No. 5005 THUMB DRIVER

is designed for 5/8" ground rod drivers and can be used on ground rods up to 3/4" diameter



### 1/2" Keyed Chuck Kit

Cat. No. 2590

Kit includes: Chuck and attached 7/16" Blue Bully Hex Drive Adapter & Chuck Key

Keyed 3 jaw chuck adapter for use with impacts to drill holes in steel, wood or fiberglass

\*Not for use with bits that cause continuous impacting



### 1/2" Keyless Chuck Kit

Cat. No. 2530

Keyless 3 jaw chuck adapter for use with impacts to drill holes in steel, wood or fiberglass

\*Not for use with bits that cause continuous impacting

## Tired of breaking adapters?



Blue Bully® adapter 7/16" to 1/2" sq.  
Cat. No. 2801

- 7/16" Hex Adapter for 1/2" Sq. Drive Sockets
- Advanced Toughness and Wear Resistance
- Reduced Deformation
- Maximum Mechanical Properties
- Advanced Impact Resistant Technology
- Aerospace Quality/Engineered Shock Steel
- Increased Torque Yield Points



# ROBOTOOLS™

## The DIRT BAG



Cat. No. 5107 8' x 8' v-notch  
Cat. No. 5619 8' x 8' square  
Cat. No. 5127 10' x 10' square

- Creates a safer job site, eliminating injuries
- Setting poles becomes easier, cleaner and faster
- Save thousands of man hour dollars
- Save time filling holes, moving material and cleaning
- Proprietary "V- Notch" design for close "to-the-pole" use
- Stronger than any other like tarp
- 22 oz. coated polyester reinforced with 5000 lb. rated straps
- Superior strength webbing and abrasion resistance
- Size : 8' x 8' for poles to 55 ft.
- Size : 10' x 10' for poles over 55 ft.

## Pressure Digger Auger Sock

Cat. No. 5714



- Designed to cover Pressure Digger Truck Augers
- Covers Augers 25"dia, 36" overall length, & 24" height
- Heavy Duty Vinyl Construction
- Reinforced Zipper for easy installation and removal
- Locking Buckle on top for added security
- Handle on bottom of sock for easy tailings removal
- Reflective striping stitched in for added visibility

## Grip Stik Tap Twister

Cat. No. 5438



- Designed to be used for switching taps on Pad Mount Transformers
- Provides additional leverage with positive control
- Grip-Stik handles fold for easy storage on sticks
- For use with hot stick or switch stick with 1-1/4" diameter body
- Length with handles extended: 21"
- Weight: 2.5 lbs.





# ROBOIMPACTS®



Powered by Variable Voltage Robopaks® or other DC power sources, Roboimpacts® are so versatile they can be powered between 24v - 36v, providing up to 2500 impacts per minute and 450+ ft./lbs. of torque. Roboimpacts® are used by linemen and professional workers all over the world. They are also standard issue items on many military vehicles. Unmatched in power, durability and reliability!



## Pistol Grip Impact

- Cat. No. 2008 7/16" Hex Quick-Change
- Cat. No. 2010 1/2" Square Drive
- Cat. No. 2016 3/4" Square Drive

- Extremely powerful and fast!
- Attached 8 ft. cords plug into Robopaks® for versatile power tool needs.
- Powerful 30 amp reversible motors provide 450+ ft./lbs. of torque and 2500 impacts per minute.
- Reversing switches located on high strength, impact resistant handles.
- Secondary 2-position attachable handles provide added control.



## D - Handle Impact

- Cat. No. 2001 7/16" Hex Quick-Change
- Cat. No. 2002 1/2" Square Drive

See pgs 20-21  
for RoboPak® options

The D-Handle 36v Cordless Roboimpact® is the most powerful tool of its kind in the world! Powerful 30 amp reversible motor provides in excess of 2500 impacts per minute and 450 ft./lbs. of torque for the most demanding drilling and hardware applications.

- Voltage: 36v
- Ft./Lbs. of Torque: 450
- Impacts Per Minute: 2500
- Chuck: 7/16" Hex Quick-Change
- Cordless Battery: 4.0 amp/hr. Li - ion
- Charging: AC Li - ion
- Weight (Tool and Li-ion Battery): 12.5 lbs.
- Average drill time in 10" diameter pole: 9 seconds
- Average number of holes per charge in 10" diameter pole: 20+



- Cat. No. 5310 - Tool, 2 - 2756 Li-ion Batteries and 4376 A/C Charger
- Cat. No. 5309 - Tool, 1 - 2756 Li-ion Battery and 4376 A/C Charger
- Cat. No. 3404 - Tool Bag, Black Canvas

1-800-874-4702





# ROBOIMPACTS®

Extremely small, lightweight, Lithium Powered and durable. It will handle all your drilling and hardware needs. The cushioned handle and "gun like" feel will increase job efficiency, reduce operator fatigue, and allow use in environments where hoses and cords are unsafe or inconvenient.

- Voltage: 18v
- Ft./Lbs. of Torque: 350
- Impacts Per Minute: 0 - 2300
- Chuck: 7/16" Hex Quick-Change
- Cordless Battery: 18v Lithium - Ion 4 Ah
- Charging Options: AC
- Weight (Tool and Battery): 5.7 lbs.



## Kits

Cat. No. 5600 Tool, two 3419-4 Batteries, 4419 Charger and Case

Cat. No. 5601 Tool, one 3419-4 Battery, 4419 Charger and Case

Cat. No. 5602 Tool, one 3419-4 Battery, 4419 Charger and 4420 Inverter & Case

Cat. No. 5603 Tool, two 3419-4 Batteries, 4419 Charger and 4420 Inverter & Case

**\*\* case is made of strong, rugged molded plastic - custom fit**



Cat No. 5040 Orange Vinyl  
H 17" x W 11"



Easily carry, organize and store your cordless tools and accessories. Made of heavy-duty vinyl with durable shoulder strap and mounting rings. Mounts easily in bucket or vehicle. Deep center pocket for tool, batteries and charger. Side bit holder and two front pockets to hold sockets.



Cat No. 3404 Black Canvas Bag  
H 9" x W 9" x L 18"





# ROBOPAK ADAPTERS



**Power 100's of Tools**  
**Increase Run Time up to 300%**  
**Popular Tool Adapters**



Plug Adapter  
in here



Plug Battery  
end in here

## Dewalt Tools

Cat. No.	Voltage	Chemistry
5017	- 24v	NiCd
5016	- 18v	NiCd
5205	- 14.4v	NiCd
5266	- 12v	NiCd
5620-8	- 20v	Li-ion

## Milwaukee Tools

Cat. No.	Voltage	Chemistry
5012	- 18v	NiCd
5273	- 28v	Li-ion
5464-8	- 18v	Li-ion

## Burndy / Makita / Greenlee

Cat. No.	Voltage	Chemistry
3923	- 14.4v	NiCd
5203	- 18v	NiCd
5351	- 18v	Li-Ion

## Hilti Tools

Cat. No.	Voltage	Chemistry
5634	- 18v	Li-ion

## Other Specialty Adapters

3437	- 14.4v	Huskie
3413	- 12v	Greenlee, Makita
3465	- 14.4	Huskie Dual NiCd
3892	- 9.6v	EK 425 Fairmont
5235	- 12v	Single Female Power Receptacle
5236	- 12v	Dual Female Power Receptacle



\* Other adapters and custom adapters available. Please call.





# ROBOPAKS®

Highly requested Robopaks® can power tools, lights and equipment that require 36v, 24v-28v, or 12v- 14.4v to operate. The XL 36-12 or XL 36-18 can be taken where you need it. Simply plug your tool into the Variable Voltage Power Receptacle and you automatically have the proper voltage required and the power to finish the job! Charge friendly, the XL 36-12 and XL 36-18 can be recharged at any point of discharge and can be left on charge when not in use. Additional features include a refurbish program that will save you hundreds of dollars.

## XL18/36 Robopak®

Cat. No. 3191

### Tool Adapters

- 5050 - Dewalt 36v Li-ion
- 5052 - Dewalt 18v Ni-cd
- 5053 - Makita 18v Ni-Mh
- 5542 - Makita 18v Li-ion
- 5056 - Milwaukee 18v Ni-cd



- 36v..... 7.2 Amp Hr. Capacity
- 18v.....14.4 Amp Hr. Capacity
- Dimensions: 10-5/8" L x 9-11/16" W x 6-7/8"D
- Weight: 22 lbs.



4288 A/C Charger

## XL12/36 Robopak®

Cat. No. 3670

### Tool Adapters

- 5057 - Dewalt 24v
- 5250 - Dewalt 36v Li-ion
- 5412 - Hilti Ni-cd 36v
- 5411 - Milwaukee 28v
- 5436 - 12v Single Power Receptacle
- 5462 - 12v Dual Power Receptacle



- 36v..... 7.2 Amp Hr. Capacity
- 24v - 28v..... 7.2 Amp Hr. Capacity
- 12v - 14.4v.....21.6 Amp Hr. Capacity
- Dimensions: 10-5/8" L x 9-11/16" W x 6-7/8"D
- Weight: 22 lbs.



4379 A/C Charger



## SS 200 Robopak®

Cat. No. 3580



- Amp Hr. @ 24v - 28v.....12A
- Amp Hr. @ 18v.....12A
- Amp Hr. @ 12v - 14.4v.....24A
- Amp Hr. @ 6v.....48A

- Dimensions: 9-3/8" L x 6-1/4" W x 5-5/8" D
- Weight: 22 lbs.



4210 Accu Charge D/C Charger



4329 A/C Charger

See pg. 19 for tool adapters



## SS-LP Robopak®

Cat. No. 3439



- 24v..... 12 Amp Hr. Capacity
- Dimensions: 10-5/8" L x 9-11/16" W x 4-7/8"D
- Weight: 22 lbs.



4366 A/C Charger

see pg. 17 for RoboImpacts®





# ROBOPAKS®



## Kit 5228:

Power all Huskie Tools.

Includes: Adapter, XL 9280 Robopak® and AC Charger

## Kit 5061:

Power EK 425 Fairmont Tool.

Includes: Adapter, XL 9280 Robopak® and AC Charger

## Kit 5060:

Power all 14.4v Burndy, Makita, Stanley and Cembre tools.

Includes: Adapter, XL 9280 Robopak® and AC Charger

## XL 9280

Cat No. 3481



- Amp Hr. @ 24v - 28v.....7.2A
- Amp Hr. @ 18v.....7.2A
- Amp Hr. @ 12v - 14.4v...14.4A
- Amp Hr. @ 6v .....28.8A



4338 AC Charger



- Dimensions: 9-3/8" L x 6-1/4" W x 5-5/8" D
- Weight: 18 lbs.

**See pg.19 for additional tool adapters**



## XL 9200

Cat No. 3600



- Amp Hr. @ 24v - 28v..... 12A
- Amp Hr. @ 18v.....12A
- Amp Hr. @ 12v - 14.4v...24A
- Amp Hr. @ 6v..... 48A

**XL-9200  
2 year Pro Rated  
Warranty**

## Kit 5189:

Includes: 2001 24v Impact (pg.17), XL 9200 Robopak® and DC Charger

## Kit 5190:

Includes: 2001 24v Impact (pg.17) XL 9200 Robopak® and AC Charger



4210 Accu Charge  
DC Charger



4329 AC Charger

- Dimensions: 9-3/8" L x 6-1/4" W x 9" D
- Weight: 22 lbs.





# ROBOPAKS®

## BackupRobopak® Cat. No. 3501



The Solar Battery Backup Braking System offers peace of mind with maximum safety during emergency situations. This unit contains the highest quality sealed batteries that are maintained during periods of non-use via the fully encapsulated Solar Maintenance Charger. Designed to operate independently of the vehicle's electrical system. It is durable and corrosion proof.

Simply the best battery backup system available.

- Cast ALMAG 35 Housing
- Sealed Long-Life Military Batteries
- Fully encapsulated Solar Voltaic Cells
- High Quality Momentary Switch
- Quick-Connect / Disconnect Features

12v RoboPak for  
Night Stalker LED Scene Light pg.24



## SS-11 Robopak® Cat. No. 3266

24 v @ 17 amp hour

- Dimensions: 10-5/8" L x 9-11/16" W x 6-7/8" D
- Weight: 30 lbs.



4366 A/C Charger



## Deluxe Robopak® Cat. No. 3889

12 v @ 34 amp hour

- Dimensions: 10 -5/8" L x 9 -11/16" W x 6 -7/8" D
- Weight: 30 lbs.



4346 A/C Charger



## Night Stalker Robopak®

Cat. No. 3204  
12 v @ 34 amp hour

- Dimensions: 10-5/8" L x 9-11/16" W x 6-7/8" D
- Weight: 30 lbs.



4115 A/C Charger



# ROBOLIGHTS™



**The Ultimate  
LED Helmet Light**  
Cat. No. 7625

The Ultimate Headlamp offers high, low and flash output. The Ultimate uses a MaxBright LED that allows the beam to spot at distances. The Ultimate comes with a rubber hard hat strap & 3M Dual Lock to securely attach to your hard hat.

**Specs:**

- Power - 130 Lumens
- Batteries - 3AAA Alkaline included
- Burn Time - 21.5 hrs Headlamp only
- Weight - 3.7oz
- Waterproof - IPX7



**The Ultimate 360  
LED Helmet Light**  
Cat. No. 7373

The Ultimate 360 Headlamp offers high, low and flash output plus a highly visible LED band with reflective strips that encircles the hardhat and offers "be-seen" lighting as well as task lighting. The Ultimate 360 comes with a rubber hard hat strap & 3M Dual Lock to securely attach to your hard hat.

**Specs:**

- Power - 165 Lumens
- Batteries - 3AAA Alkaline included
- Burn Time - 21.5 hrs Headlamp only
- Burn Time - 4.1hrs Headlamp and Band
- Weight - 5.75oz
- Waterproof - IPX7



## Grab-n-Go Magnetic LED work light

This Versatile and rugged magnetic light lets you attach to any ferrous metal and position the light right where you need it.



**Magnet Mount  
High Power LED**  
Cat. No. 7225

3700 Lumens  
51 Watt  
5" Magnet w/ 200 lbs. of pull force  
On / Off switch  
12v DC power

**Magnet Mount  
High Power LED**  
Cat. No. 7444

4500 Lumens  
45 Watt  
5" Magnet w/ 200 lbs. of pull force  
On / Off switch  
12v DC power





# ROBOLIGHTS™



## Night Stalker 100w LED Light

Cat. No. 7002

4 Heavy Duty 9 LED WorkLights  
8,600 Total Lumens  
12v 9amp operation  
Tough Waterproof Construction  
Aluminum Housing LED's  
Durable PMMA Lenses  
Operational Temp -40c to +60c  
Heavy Duty Stand w/ Adjustable Tripod  
Max Height - 12ft  
Nylon Carrying Bag included  
1year Warranty on parts and labor  
*\* RoboPak® 12v 34aH - sold separately*



## Super Night Stalker 150w LED Light

Cat. No. 7006

2 Heavy Duty 13 LED WorkLights  
7,400 Total Lumens  
12v 13amp operation  
Tough Waterproof Construction  
Aluminum Housing LED's  
Durable PMMA Lenses  
Operational Temp -40c to +60c  
Heavy Duty Stand w/ Adjustable Tripod  
Max Height - 14ft  
1year Warranty on parts and labor  
*\* RoboPak® 12v 34aH - sold separately*



## Flagger Safety Light w/ quad pod stand

Cat. No. 7646

- Two - 4" - Six Diode patten - 500 Lumens each
- High output LEDs produce an extremely bright, white light
- Very rugged - shock, vibration and weather proof
- Impact resistant polycarbonate lens
- Corrosion resistant anodized aluminum housings
- Metalized reflector produces intense spot/flood pattern
- Telescoping height up to 10.5'
- Power source: 12v (24v also available)

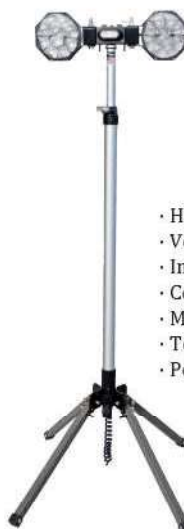
*\* RoboPak - sold separately*



## Green Hornet w/ quad pod stand

Cat. No. 7005

- High output LEDs produce an extremely bright, white light
- Very rugged - shock, vibration and weather proof
- Impact resistant polycarbonate lens
- Corrosion resistant anodized aluminum housings
- Metalized reflector produces intense spot/flood pattern
- Telescoping height up to 10.5'
- Power source: 12v (24v also available)





# ROBOLIGHTS™



## FlareLight Kit

Cat No. 7029

Contains four Red and one Amber FlareLights with five separate metal support plates that will provide additional security and weight if needed. Batteries included.

## Rechargeable Handheld Spot Light

- Handheld
- Swivel Head
- Comfort grip handle
- Sealed lead based battery
- 27 watt 2150 lumen LED



Cat No. 7181-LED



Cat No. 7260  
12v Vehicle Mount Charger

**Cones alone are not enough!** Maximize the safety of your workers and surrounding areas with the Robolight™ ConeLights. Robolight™ ConeLights are small, versatile and more effective than using cones by themselves. Providing a safer alternative, ConeLights can be easily placed over your cones. ConeLights utilize durable long lasting weather resistant LEDs. Lights are attached to rust resistant powder coated orange plates that can be used with all cone sizes. 4 AA Batteries Included.



## Cone Light Kits:

Contains 4 lights in a crush proof case.

Cat. No. 7038-R (4-Red) - Kit

Cat. No. 7039-A (4-Amber) - Kit

## Singles

Cat. No. 7036-R single red

Cat. No. 7037-A single amber



**Mailing:**  
**P.O. Box 3038**  
**Elida, Ohio 45807**

**Shipping:**  
**418 E. Kiracofe Ave.**  
**Elida, Ohio 45807**

# ROBOTTOOLS™

[www.AircraftDynamics.com](http://www.AircraftDynamics.com)

Utility Division

RoboTools™

RoboPaks®

RoboLights™

1-800-874-4702

